



IN-LINE SPRAY SYSTEM



IMPROVE
YOUR PROFITS
WITH AN IN-LINE SPRAY SYSTEM

888-868-5891

www.lumberhandling.com



ELIMINATE YOUR DIP TANK

The Froedge In-line spray system was developed to chemically surface-treat lumber. It replaces chemical dip tanks. This clean, efficient spray system can be integrated into existing lines, reducing labor, chemical expense, material

handling, and safety compliance issues. Froedge spray systems have even been installed by users not previously applying treatment, because this low-cost, low-hassle method improves profits by increasing value.

REDUCE CHEMICAL COSTS BY AS MUCH AS 66%

- ✓ Less capital expense
- ✓ Eliminate the cost of a forklift and driver
- ✓ Eliminate an extra material handling step
- ✓ Reduce maintenance time and cost

HOW IT WORKS

The process starts in the mixing room which comes as a complete pre-fab unit or can be installed in an existing room. Chemicals are automatically mixed and pumped to the spray box.

The spray box uses manifolds and pressurized spray nozzles engineered for 100% consistent coverage on every board – something that dip tanks can't do. The spray box and pass-through chains are made from stainless steel to prevent corrosion. A negative pressure air system contains the spray inside the chamber, with drain pans catching any drips and returning it for recirculation.

“Perhaps the easiest payback of any machinery purchase we have made. It's an investment that we should have made years ago.”

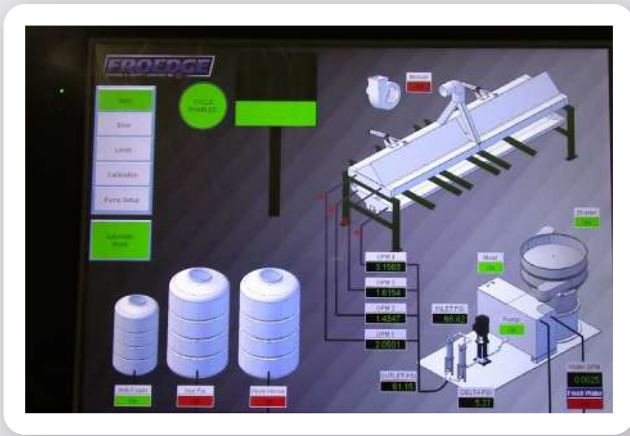
– David Anderson, Roy Anderson Lumber

EXTREMELY VERSATILE

- ✓ Hardwood or softwood
- ✓ Transverse or linear feed types

APPLY

- ✓ Anti-stain
- ✓ Iron-fix
- ✓ Brighteners
- ✓ Anti-fungal



SIMPLE AND EASY TO USE

The system is run by touch screen controls. An operator can monitor and control virtually every part of the system – including the chemical mix, spray volume, nozzle effectiveness, and even airflow inside the chamber – from a central location. The system monitors all processes and signals the operator if any problems arise.



The mix-tank is automatically controlled for mix and fluid level. Both fresh mixture and the recycled fluid is mixed here.



A single automatically controlled pump pressurizes all four spray manifolds



The spray mix passes through large filters before being pumped to the spray box – this helps to keep spray nozzles clean and reduces downtime.



Atomized mist particles are pulled from the box by a stainless steel blower. These particles pass through a mist eliminator box where they are condensed back to a fluid, and returned to the chemical room to be recycled.



Spray mixture that is returned to the chemical room passes through a shaker separator, which removes any fiber residue that may have been introduced during the spray process.

Specifications subject to change without notice. Due to varying regulations, some products may not meet all local, regional or national requirements without modifications.

HERE TO MAKE IT WORK

888-868-5891

FROEDGE
MACHINE & SUPPLY COMPANY INC

www.lumberhandling.com